

## Three stages of the world-famous Rheinsteig

### The Rheinsteig The

Rheinsteig is one of the hiking classics in Germany. The more than 300 kilometres long hiking trail along the Rhine, from Wiesbaden to Bonn and founded in 2005, is "*Wandern auf hohem Niveau*" in two senses: the route has the necessary climbs, as the name suggests, and is a "Premium road", a quality mark of the German hiking institute that sets high quality standards for hiking trails. The quality mark offers the hiker the necessary guarantees regarding the marking, the unpaved hiking trails, the maintenance, the views, the presence of cultural treasures, possibilities for shelter, and so on. It also places demands on the hiker. Such as: *Sei beim Wandern nicht unnötig laut und schalte den Handy-Modus "lautlos". Der Klang der Natur ist nicht zu hören, wenn Menschen laut sind oder gar schreien oder beim Wandern laute Musik hören. Es ist nicht nur für andere unangenehm, sondern auch für wildlebende Tiere.*



### Views

#### Three stages

We walked three stages of this classic, from Kestert to Lorch, via Heide and Kaub. On the right bank of the Rhine. In the Upper Middle Rhine Valley. Perhaps the most beautiful part of the entire route. On the UNESCO World Heritage List. 51 kilometers of ascent and descent, past castles, vineyards and historic inner cities. A region with the necessary influence on writers, poets, composers and other artists.



### **The special character of the**

area What makes this area so special? Perhaps the combination of what nature has to offer here and what people have made of it. And then you are talking about the high vineyards and the steep cliffs and the beautifully situated castles, fortresses, palaces and churches. Summed up by many as the Rhine Romanticism. The hiker does not have to be bored here for a moment. The views are magnificent and constantly different. Often at altitude you overlook miles of river, then again the view is limited to the slope with sharp bends in front of you, in a dense dark forest. To then come out with the tongue on the floor in the light, at a bench – well: couch! – in exactly the right place. Particularly beautiful is the descent to Kaub over the so-called Rheingauerpfad. Also called the Rieslingpfad. In other words: through vineyards and wine villages. Highly recommended: At Kaub you can visit the Castle Pfalzgrafenstein, which can be reached with a short boat trip. You must have visited a "castle" in a river...



**Pfalzgrafenstein**

## Loreley

If, like us, you want to go back to the beginning of the tour in Kestert at the end of the third day of hiking, it pays to do so with a boat trip. Say a mini-reisje-op-de-Rijn-Rijn-Rijn. In a boat full of Japanese and Chinese, after a while of sailing you look expectantly at a rock in a bend of the river, where there is nothing else to see, but the swelling music under the poem by Heinrich Heine, started by the captain of the boat at exactly the right time ..... Yes, what do you think of that?

*Die schönste Jungfrau sitzet  
Dort oben wunderbar,  
Ihr gold'nes Geschmeide blitzet,  
Sie kämmt ihr goldenes Haar*

It is fascinating that to this day the song about the fatally beautiful young woman who combs her hair with a golden comb and who lured many a skipper to death through her singing has such an appeal. You can also say that with the Loreley, the tourism industry designed the perfection marketing campaign. Anyway, we reached Kestert safely.



**Katz Castle**



**Goarshausen**

## General route tips

- The criteria of a Premium road also include the presence of sufficient accommodation on the way. And there is. Hotels and campsites. There are also countless possibilities to have your accommodation taken care of, including luggage transport between the stage places. As far as we are concerned, Germany is already far ahead of France in terms of hiking.
- You are not allowed to spend the night on a site without the owner's permission.
- Do not underestimate the many climbs. It's constantly up and down.
- The walking area is easily accessible by train. Via Bonn and Koblenz and a local railway to Kestert.
- The marking of the main route is a white garland on a blue background. The access routes are yellow.





**Kaub**

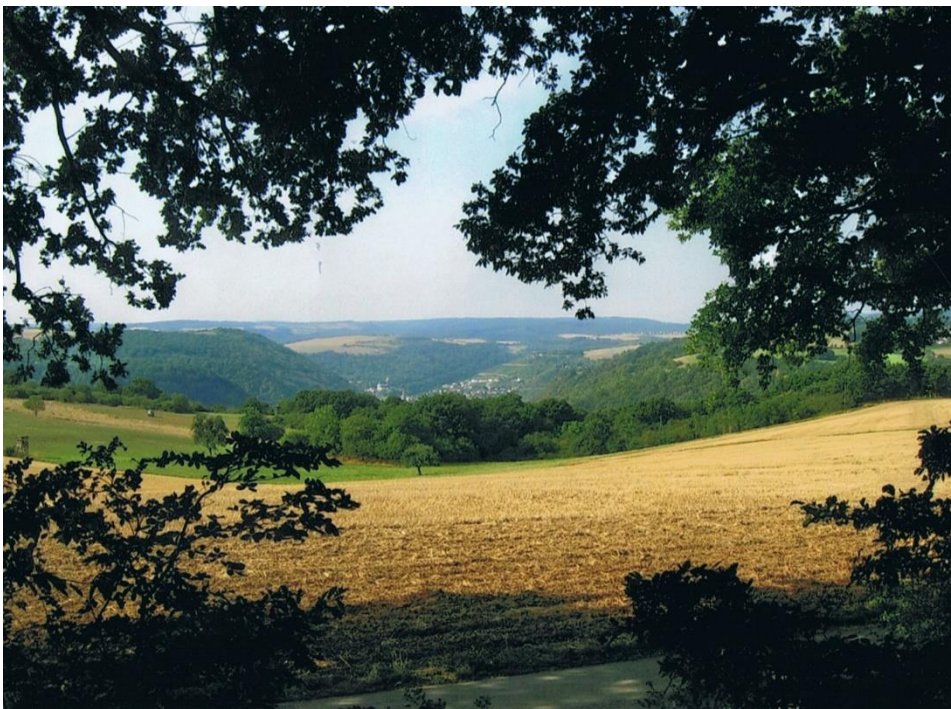


**Mark**





**View**



**At height, over the fields**

